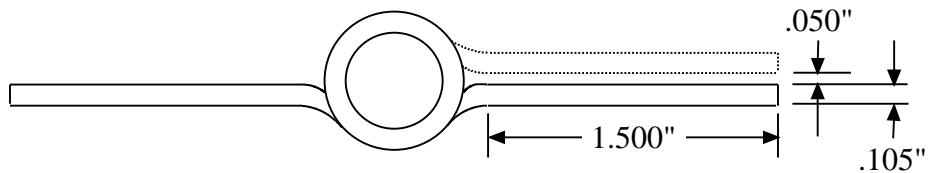
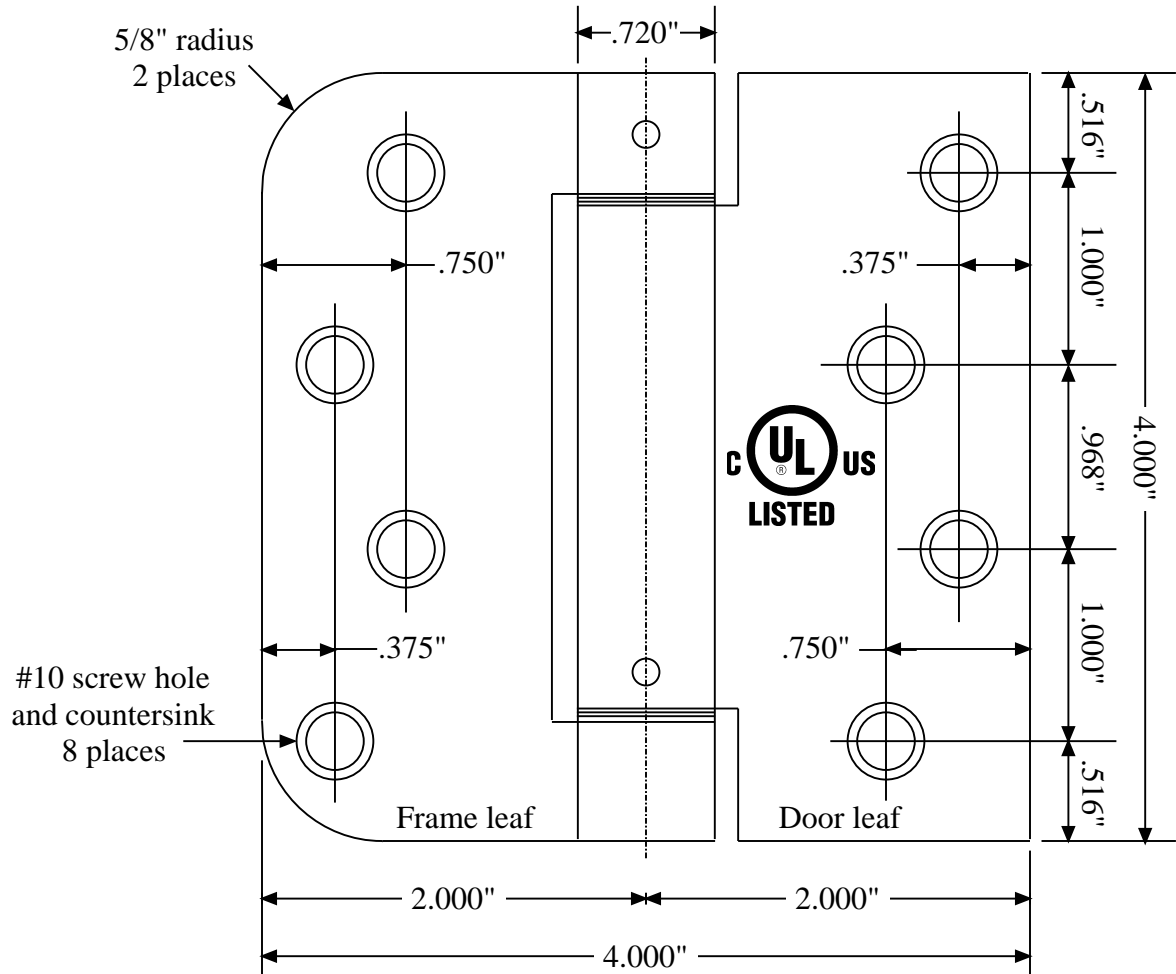




**Full mortise C non-template handed light weight spring hinge
UL listed for fire door application**



Left hand shown. Right hand opposite.

Part Number	Left hand	Right hand
Steel	RS8C4040LH	RS8C4040RH
Stainless steel	RS5C4040LH	RS5C4040RH

Standard screws: 8 #10 x 1" wood and 8 #10-24 x 1/2" machine screws per hinge.