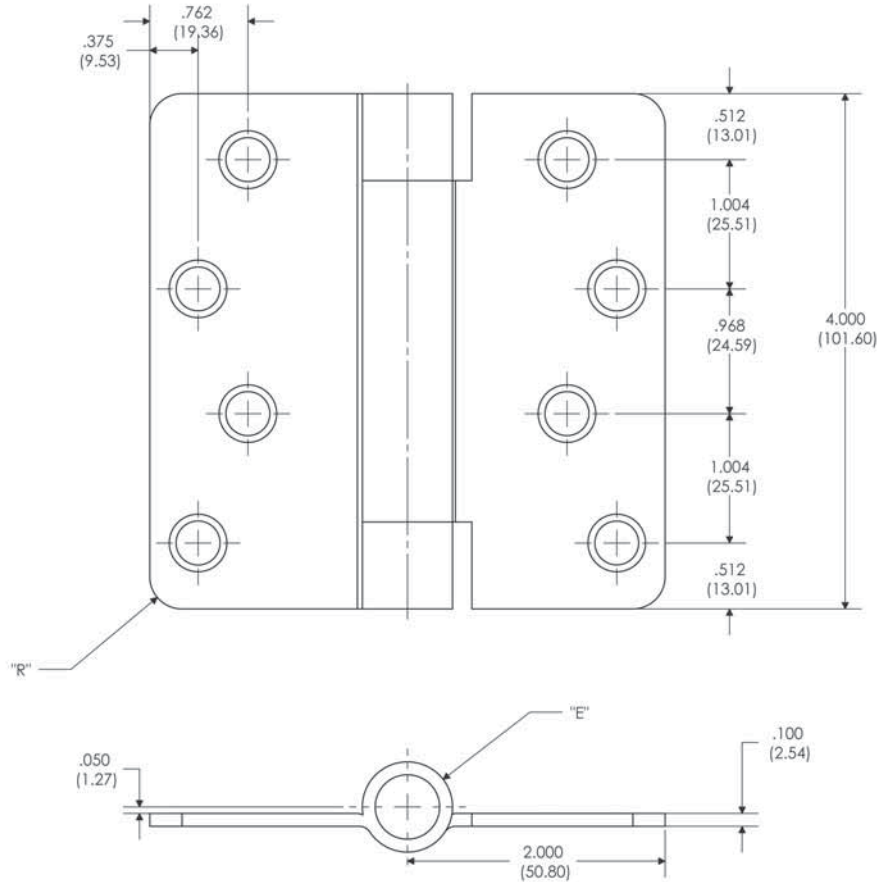




FULL MORTISE U.L. LISTED SPRING HINGE

RS
4" x 4"



| Part Number | | | Gauge of Metal | "E" Outside Dia. | "R" Corner Radius |
|-------------|-------|-----------|----------------|------------------|-------------------|
| Steel | Brass | Stainless | | | |
| RS81 | - | - | .100" | .720" | Square |
| RS81 | - | - | .100" | .720" | 1/4" |
| RS81 | - | - | .100" | .720" | 5/8" |

NOTE:

- 1 screw pack includes (24) machine screws and 1/2 (12) wood screws. ATMS & AWS also available.
- Screw size: FHMS - 12-24 x 1/2"
FHWS - 12 x 1-1/4"
- All hinges are ANSI template.

PBB, Inc.
World Class Hinges
1311 E. Philadelphia Street • Ontario • CA 91761 • USA
PBB reserves the right to make changes without notice.

Template: RSY40