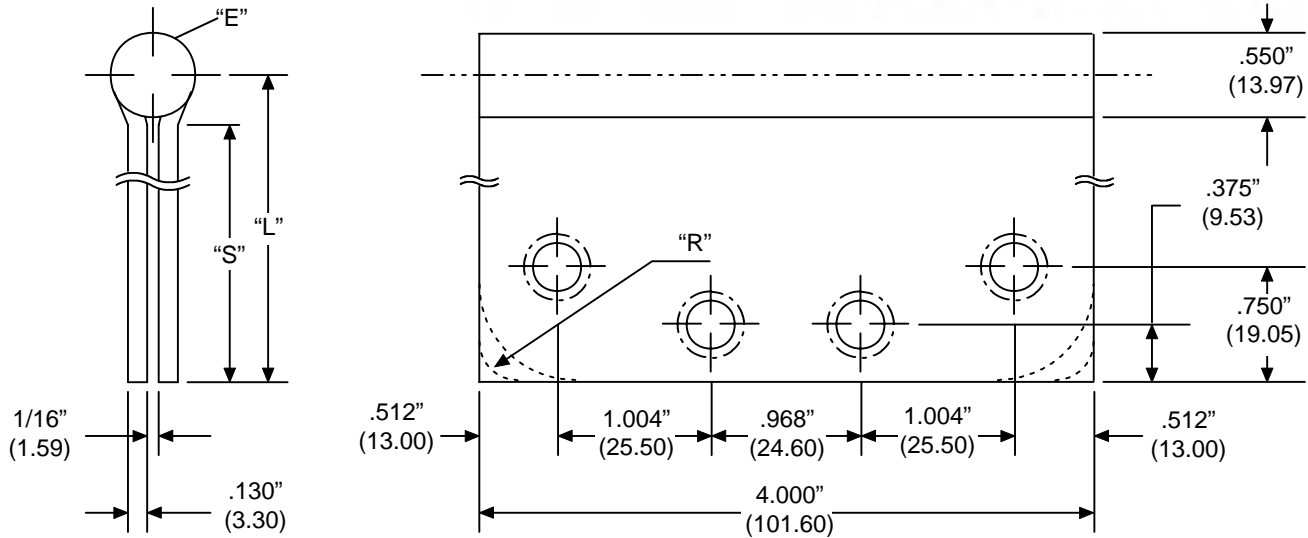




FULL MORTISE STANDARD WEIGHT TEMPLATE

WTBB - WTPB - WTCB - WTCP - WTFB

4" x 4 1/2" 4" x 5" 4" x 6"



| Part Number | | | Gauge of Metal | "E" Outside Dia. | "L" Leaf Width | "S" Swage Line | "R" Corner Radius |
|-------------------|-------------------|-------------------|----------------|------------------|----------------|----------------|-----------------------|
| Steel | Brass | Stainless | | | | | |
| WTBB81/ WTPB81 | WTBB21/ WTPB21 | WTBB51/ WTPB51 | .130" | .550" | 2.25" | 1.92" | Square, 1/4", 5/8" |
| WTBB81/ WTPB81 | WTBB21/ WTPB21 | WTBB51/ WTPB51 | .130" | .550" | 2.50" | 2.17" | Square, 1/4", 5/8" |
| WTBB81/ WTPB81 | WTBB21/ WTPB21 | WTBB51/ WTPB51 | .130" | .550" | 3.00" | 2.67" | Square, 1/4", 5/8" |

NOTE:

- 1 screw pack includes all machine screws (24), and 1/2 wood screws (12). ATMS & AWS also available.
- Screw size: FHMS - 12-24 x 1/2"
FHWS - 12 x 1-1/4"
- All hinges are ANSI template.

Template: WTBB40

PBB, Inc.
World Class Hinges

1311 E. Philadelphia Street • Ontario • CA 91761 • USA
PBB reserves the right to make changes without notice.