



PRODUCT MODIFICATIONS

Standard Edge Guard

Cut-Outs

- 4 7/8 ASA strike
- 161 latch/strike
- 86 Mortise
- Manual/Automatic Flush Bolt
- Templates may be required for custom cutouts.

-Separate edge guard order form required. See page 24.

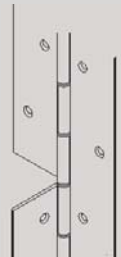


Dutch Door Prep

Available on all hinge models.
Continuous frame leaf with two-piece door leaf.
Indicate handing, clearance, door and frame heights, and materials when ordering.

Separate dutch door order form required.

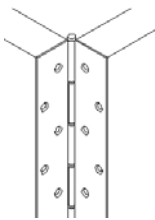
Suffix - "D"



Wide Throw/Narrow Leaf

Specify distance from pin centerline to heel edge of hinge when ordering.
Reinforcement may be required on extreme wide throw applications.

Suffix - "W"

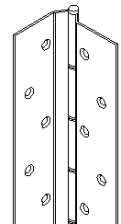


Raised Barrel (Swaged)

Available on all edge mount (CH51R) and half surface (CH54R) models.

For cased open or center pivot doors.

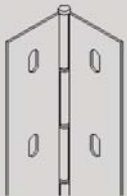
Suffix - "R"



Custom Hole Pattern

Any hole shape or pattern other than PBB standard template hole pattern.
Indicate desired pattern and include dimensioned diagrams when ordering.

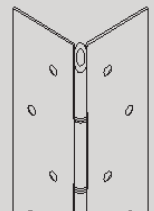
Suffix - "X"



Hospital Tip

Available on all models.

Suffix - "H"



Electric Transfer Prep

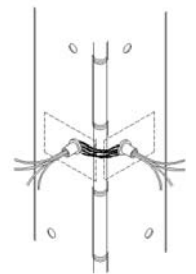
Centerline of hinge is standard location.
Hinge leaf cutout to accommodate power transfer harness made by other manufacturers. **Separate EP order form required. Single Cutout (EP-1) and Dual Cutout (EP-2)**

Suffix - "EP"



Concealed Current Transfer

- 2-20ga wires: Suffix E2
- 2-20ga & 4-28ga wires: Suffix E2+4
- 4-28ga wires: Suffix E4
- 6-30ga wires: Suffix E6
- 8-30ga wires: Suffix E8
- 10-30ga wires: Suffix E10
- Suffix - "E+number of wires required"
- UL Listed to 3 hour fire rating



Security Fastener

Torx head security fasteners are available in lieu of standard fasteners.



Security Studs

Stainless steel security studs prevent slipping of leaves as stud on one leaf projects into hole in opposite leaf when hinge is in closed position.

Three studs installed on hinges up to 7'2".

Four studs installed on hinges over 7'2".

Door and frame must be specially prepared to accommodate security studs.

Suffix - "S"

Lead Lined Cover - Only available on surface mounted hinges. Used for x-ray room doors and other locations where radiation leakage could be a problem. **Suffix - "L"**